



8GR & 10GR

Features

- Single speed hydraulic motor
- Fast line speed
- Modular design
- Operates in gear oil; opposed to grease
- Equipped with heavy duty brake
- Counter balance valve
- Standard universal kickout

Benefits

- High efficiency
- Reduces recovery time
- Easily installed on wider variety of trucks
- Brake remains cool & increases gear life
- Extends brake life
- Precision load control
- Equipped for air, hydraulic or manual disengagement



OVERALL LENGTH

Drum Size	Length	
	8GR	10GR
A	23.50	23.61
B	26.75	26.86

Rated line pulls shown are for the winch only. Consult the wire rope manufacturer for wire rope ratings. *Last layer capacity does not meet SAE J706

PERFORMANCE DATA 8GR

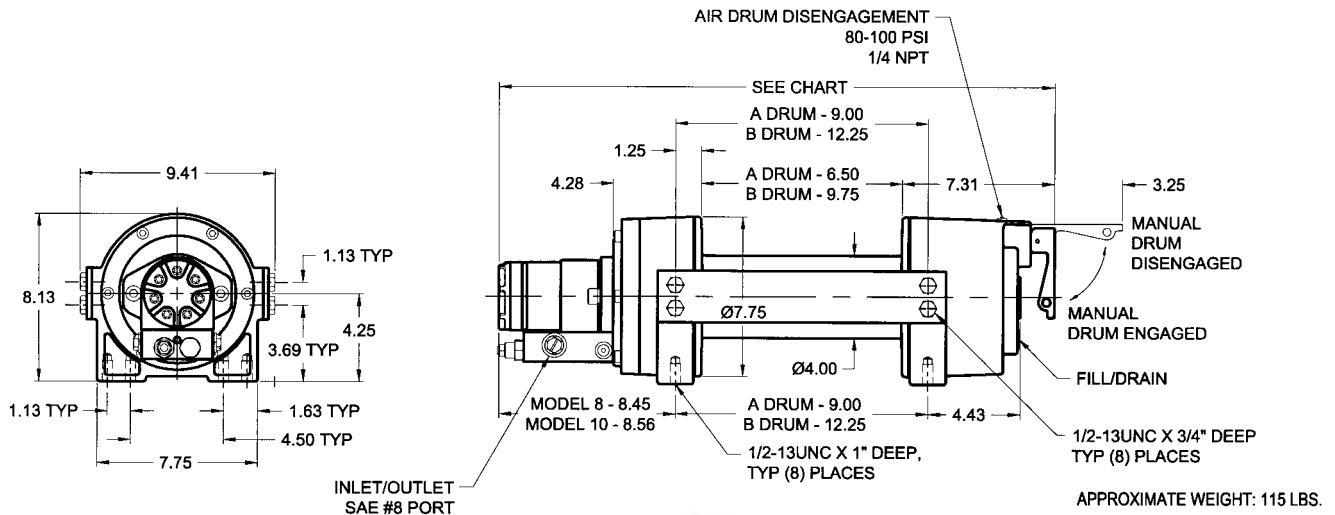
Layer	Drum Capacity		Linepull (lbs.)	Linespeed (fpm)
	A	B		
1	18	27	8,000	59
2	39	58	6,830	69
3	63	94	5,960	79
4	90	135	5,280	89
5	120*	180*	4,750	99

Performance is based on 15 gpm (Max flow) @2750 psi ø3/8" wire rope.

PERFORMANCE DATA 10GR

Layer	Drum Capacity		Linepull (lbs.)	Linespeed (fpm)
	A	B		
1	16	23	10,000	49
2	34	51	8,350	59
3	56	84	7,170	69
4	81*	121*	6,280	79

Performance is based on 15 gpm (Max flow) @2800 psi ø7/16" wire rope.



CAUTION:

The last 5 wraps of cable must be left on the drum to assist the cable clamp in holding the load.

WARNING:

Winches are not intended to be used for lifting or moving of persons

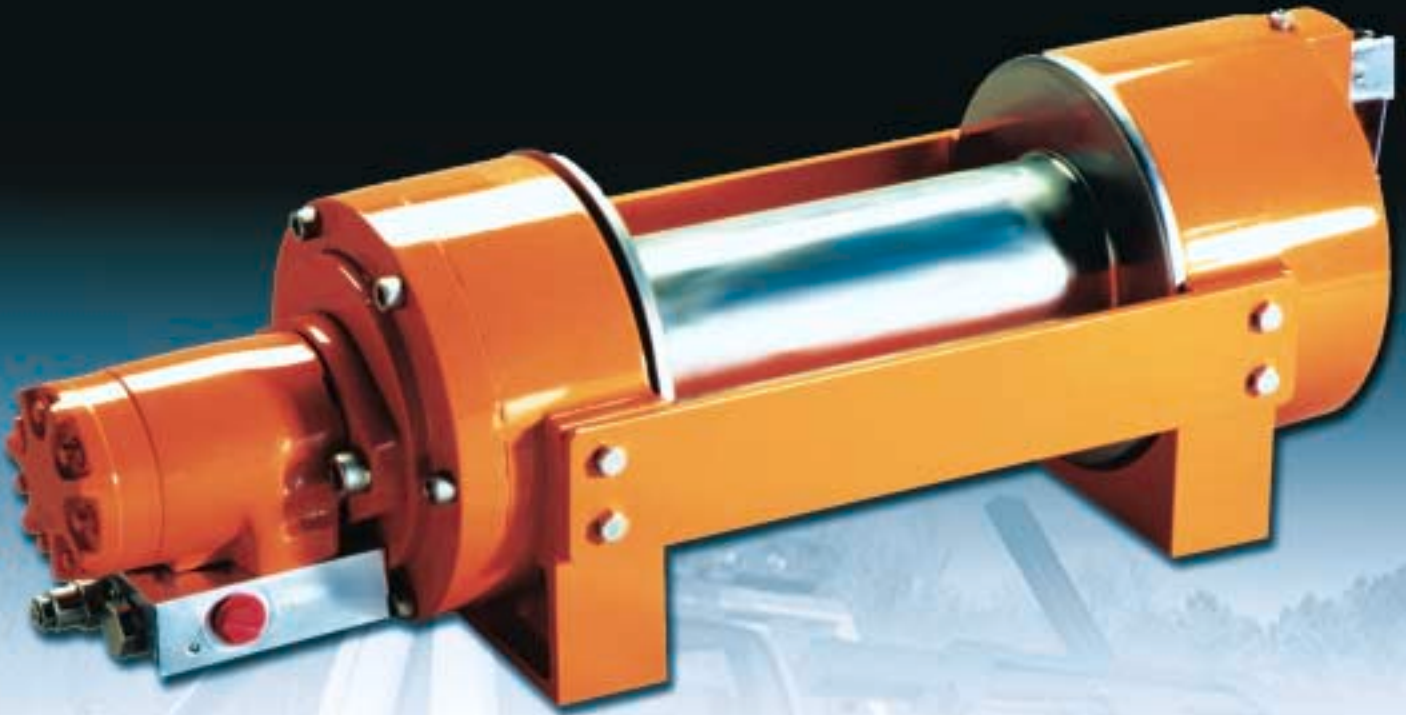


PO Box 1130 • Jenks, OK 74037-1130
Voice: (918) 298-8300 • Fax: (918) 298-8301
Website: www.team-twg.com



8GR & 10GR

Planetary Winches
8,000 - 10,000 pulling capacity



Ideal for rollback and recovery applications